

CORONAVIRUS & EDUCATION



EDUCATION GUIDANCE

Following Government guidelines we have taken every measure to ensure that our school is a COVID safe environment. We have welcomed students back into school and we are offering a varied and rich curriculum. However, there may be occasions where students are required to self isolate which would impact on their academic progress. We are therefore providing an online learning platform to support students who may find themselves in this situation so that learning can continue at home.

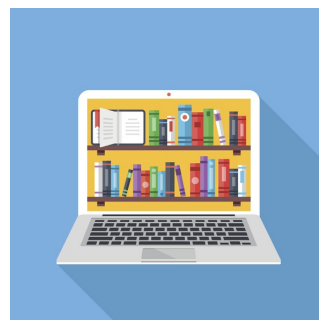
LEARNING 24/7

Our main online learning platform can be accessed here:

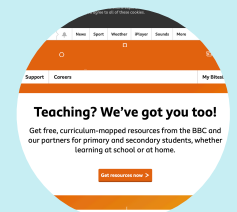
www.satchelone.com



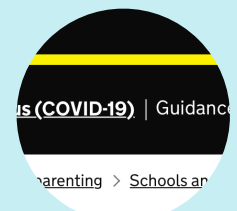
Students can access online work by following the login instructions provided. Search for the school name and then select the year group. A selection of work will then appear from a variety of subjects.



www.coalclough.org




www.bbc.co.uk/bitesize



www.gov.uk/education



www.starline.org.uk

HM Government 

**DEPARTMENT FOR EDUCATION
CORONAVIRUS HELPLINE**

0800 046 8687

8am to 6pm (Monday to Friday)

DfE.coronavirushelpline@education.gov.uk



CORONAVIRUS & EDUCATION



www.burnleytogether.org



www.burnleyfccommunity.org



www.rethink.org



www.burnley.gov.uk

ADDITIONAL SUPPORT:

We are always here to support and can be contacted in a variety of ways;

- enquiries@coalclough.org - general enquiries
- cwhittaker@coalclough.org - curriculum & online learning
- lkeenan@coalclough.org - Pupil Premium & family support
- neatwell@coalclough.org - Safeguarding & SEMH
- rburbery@coalclough.org - SEND

We appreciate that the pandemic has brought with it change and if your circumstances have changed then please use the details to the right as you may be entitled to some additional support for your child.



East Area Education Office

Hyndburn, Ribble Valley,
Burnley, Pendle and
Rossendale

Open Monday - Friday, 9am - 5pm. Closed for bank holidays.

Tel: 01254 220 747

East Area Education Office

44 Union Street
Accrington
BB5 1PL
United Kingdom

Email: pupil.accesseast@lancashire.gov.uk